

CHASE COMMERCIAL ONLINESM | ACCOUNT ACTIVITY | VIEW ACCOUNT INFORMATION

With Chase Commercial Online¹, you can view, search and download your account activity at any time.

Step
1

MY ACCOUNTS

Select the My Accounts tab to view your USD domestic business accounts, including checking, savings, MMA, CD's, Business Credit Cards, Brokerage, and JPMorgan Funds accounts, as well as eligible term loans and commercial lines of credit.

SEE STATEMENTS

INITIATE QUICKDEPOSIT

The screenshot shows the Chase Commercial Online interface. At the top, there's a navigation bar with 'My Accounts', 'Send Payments', 'Collect & Deposit', 'Transfer Funds', and 'Customer Center'. Below this, a 'Welcome YaleVision Inc.' message is displayed, along with a 'Secure Message Center' and 'Customize Accounts' options. A section for 'Important messages' is visible, followed by an 'Account Summary' table. The table lists 'Business Accounts' with their 'Present Balance'. For YaleVision Inc., the total balance is \$406,436.56. For Darby Delivery Co., the total balance is \$100,721.57. Below the summary, there are sections for 'Deposit Accounts' and 'Loan Accounts' with links to 'See statements' and 'Deposit checks'.

Business Accounts	Present Balance
YaleVision Inc. (Primary Company)	\$406,436.56
Darby Delivery Co.	\$100,721.57
Total loans outstanding	\$200,000.00

YaleVision Inc. (Primary Company)	Total balance:	\$406,436.56
Deposit Accounts		
Account		
COMMERCIAL CHECKING (...2329)	Present balance	\$206,168.00
	Available balance	\$205,000.00
	See statements	Deposit checks
COMMERCIAL SAVINGS (...6516)	Present balance	\$130,200.56
	Available balance	\$130,200.56
	See statements	Deposit checks
Darby Delivery Co.		
Deposit Accounts	Total balance:	\$100,721.57
Account		
COMMERCIAL CHECKING (...3429)	Present balance	\$75,721.57
	Available balance	\$75,721.57
	See statements	Deposit checks
COMMERCIAL SAVINGS (...7601)	Present balance	\$25,000.00
	Available balance	\$25,000.00
	See statements	Deposit checks
Loan Accounts		
Account		
REVOLVING LOAN (...2683)	Balance outstanding	\$92,755.39
	Total amount due	\$935.23
	Payment due date	04/01/2012

From this page, you may also:

- View account statements or account analysis statements by clicking the "See statements" link. Please note that an exclamation point icon will appear next to the "Statements" link when new statements are available.
- Initiate a deposit into an account for which Chase QuickDeposit² has been activated.

Note: As shown here, you can easily manage affiliated businesses under one User ID. Contact your Client Service Professional for more information.

Step
2

Click on an account from the My Accounts page to view transaction activity for that account. You can also:

- Click "Show hold information" to view information about deposits that are on hold, including when the hold was placed, the reason for the hold, the amount of the hold, and when funds will be available.

SHOW HOLD INFORMATION

- Use the drop-down menu to filter transactions by transaction type.

SHOW ME TRANSACTION TYPES

- View images of checks and deposit slips by clicking the "view" link.
- Search for transactions. For more information on how to search for transactions, please refer to the next section of this guide.

VIEW CHECK IMAGES

Note: If you selected the Standard Service Plan during enrollment, you will receive 4 months of history. If you selected the Premium Service Plan, you will receive 6 months of history. If you selected the Premium Plus Service Plan, you will receive 24 months of history.

CHASE Chase.com | Contact Us | Privacy Notice | **LOG OFF**

My Accounts Send Payments Collect & Deposit Transfer Funds Customer Center

CHASE COMMERCIAL ONLINE™

My Accounts > Account Activity

Account Activity Print Help with this page I'd like to...

Activity for... Commercial Checking (-7890) Show

Details for Commercial Checking (-7890)

Present Balance	\$106,168.00	Uncollected funds - Total	\$50,000.00
Available Balance	\$105,000.00	Uncollected funds - 1 Day	\$25,000.00
Available Credit	\$50,000.00	Uncollected funds - 2 Day	\$10,000.00
Available Plus Credit	\$100,000.00	Uncollected funds - 3 Day	\$15,000.00
Interest YTD	\$100.71		
Interest Rate	0.25%		

Deposits on Hold (\$ holds, total: \$1,100.00) Hide hold information Print hold information

Hold Placed	Reason	Hold Amount	Funds Available ¹
10/20/2009	We've placed a hold on one or more electronic funds transfers or checks in your deposit.	\$500.00	10/21/2009
10/20/2009	We've placed a hold on one or more checks in your deposit.	\$100.00	10/29/2009
10/01/2009	The issuing bank has returned a check you deposited.	\$100.00	N/A
09/29/2009	We've received a notification that requires us to place a hold on your account.	\$25.45	N/A
08/18/2009	We've been instructed by legal order to place a hold on these funds.	\$50.00	N/A

Transaction Results (1-30) for Commercial Checking (-7890) Previous | Next

All Transactions Show View checks by check number | Search Transactions

Date	Type	Description	Debit	Credit	Balance
3/8/2009	ACH Debit	Pending: POS Debit	\$18.00		
3/12/2009	Deposit	Deposit #55071		\$100.00	
3/12/2009	Outgoing Wire Transfer	Pending: Online Wire Transfer via Chase 938421 to CostEx Chicago 098334 1293482	\$50.00		
3/11/2009	Returned Deposit Item	Returned Deposit Item		\$23.00	\$106,168.00
3/11/2009	Tax Payments	Tax PMT 720	\$7,540.10		\$100,168.00
3/11/2009	Deposit	Deposit #911257		\$100.00	\$107,708.10
3/11/2009	ACH Credit	FEDWIRE CREDIT VIA: HARRIS TRUST & SAVINGS BANK		\$1,000.00	\$107,608.10
3/8/2009	Payroll Services	PAYROLL PMT TO ALFRED EMPLOY	\$450.00		\$106,608.10
3/9/2009	ATM Transaction	Withdrawal	\$200.00		\$107,058.10
3/8/2009	Outgoing Wire Transfer	ONLINE WIRE TO GEORGIA ABC CO.	\$250.00		\$107,258.10
3/6/2009	ACH Debit	Business Association Dues	\$200.00		\$107,508.10
3/6/2009	Check	Check #1456	\$23.27		\$107,708.10
3/2/2009	ATM Transaction	Withdrawal	\$200.00		\$107,763.37
3/2/2009	Outgoing Wire Transfer	ONLINE TRF TO ING DIRECT	\$250.00		\$107,963.37
2/27/2009	Incoming Wire Transfer	ONLINE TRF FROM xxxxxxxxxx		\$1,000.00	\$108,213.37
2/27/2009	ACH Debit	Business Association Dues	\$200.00		\$107,213.37
2/27/2009	Check	Check #1457	\$154.83		\$107,413.37
2/27/2009	Deposit	Deposit #911356		\$23.00	\$107,568.20
2/24/2009	ACH Debit	PAYROLL PMT TO ALFRED EMPLOY	\$250.00		\$107,568.20
2/24/2009	ACH Debit	FEDWIRE CREDIT VIA: CITIBANK		\$1,000.00	\$107,818.20
2/24/2009	ACH Debit	Business Association Dues	\$200.00		\$107,618.20
2/24/2009	Check	Check #1448	\$93.45		\$107,818.20
2/20/2009	ATM Transaction	Withdrawal	\$200.00		\$107,618.20

CHASE COMMERCIAL ONLINE | ACCOUNT ACTIVITY | SEARCH ACCOUNT ACTIVITY

You can search your account activity based on specific transaction types and date ranges. You view, download or print your results.

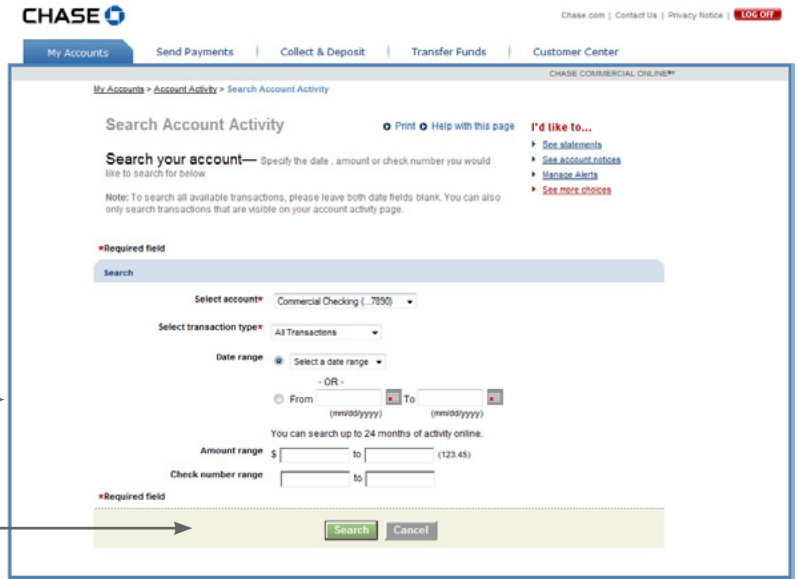
Step 1

To search account activity, click the "Search Transactions" link on the Account Activity page.

Search transactions by specifying an account, transaction type and date range. If applicable, you can also enter a transaction amount range or a check number range. Click "Search" to continue.

ENTER SEARCH CRITERIA

CLICK SEARCH

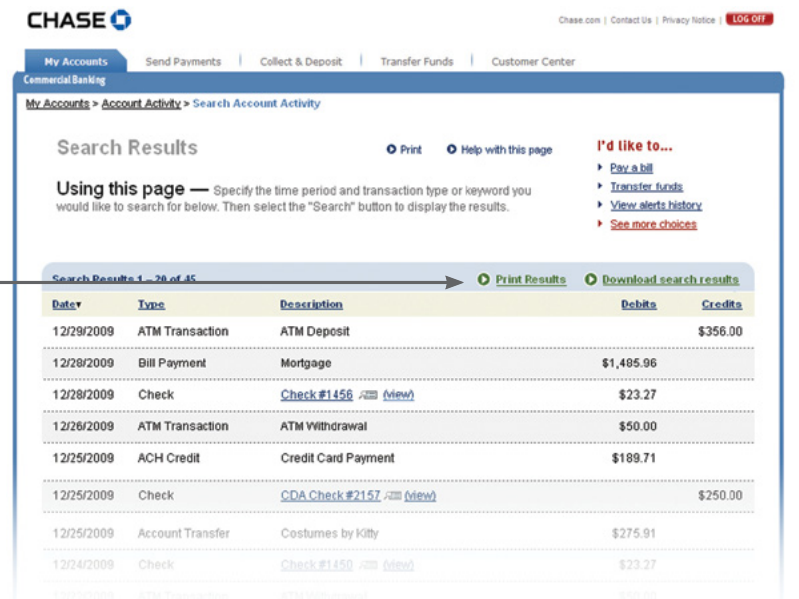


Step 2

You will see a list of the transactions that meet the criteria for which you searched. From this screen, you can print or download your search results by clicking the appropriate link.

PRINT SEARCH RESULTS

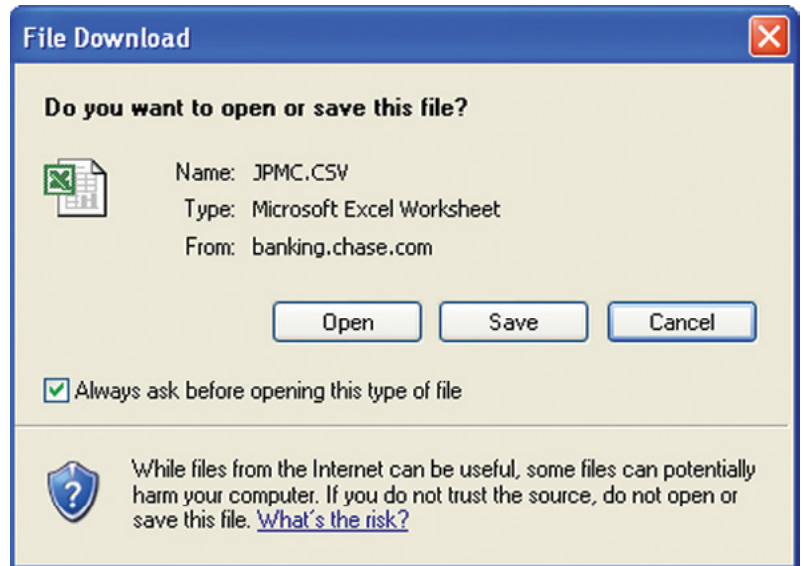
DOWNLOAD SEARCH RESULTS



Step
3

If you choose to download your search results, you will be prompted to save your results as a CSV file, which can be used with programs such as Microsoft Excel®. Click “Save” to save a copy of your search results on your computer.

NOTE: If the search results were filtered for checks, then the check number column would be included for the CSV file



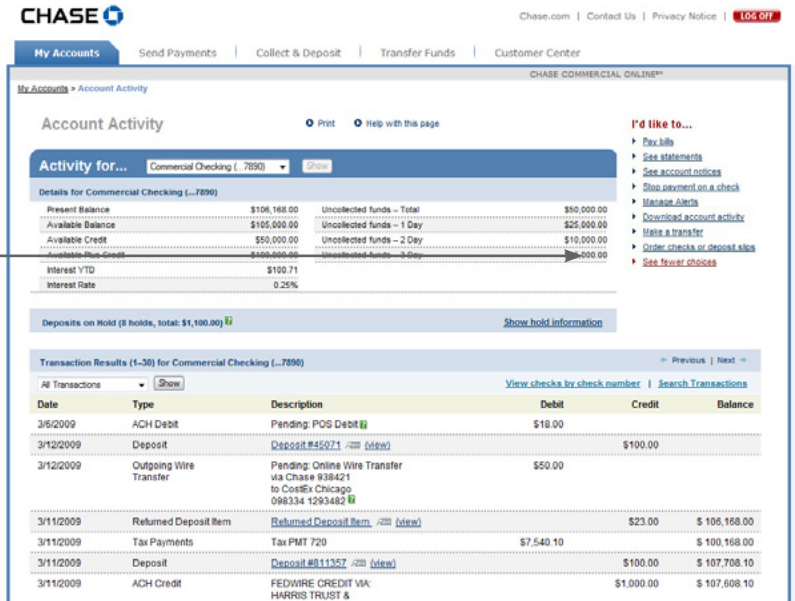
CHASE COMMERCIAL ONLINE | ACCOUNT ACTIVITY | DOWNLOAD ACCOUNT ACTIVITY

Download account activity in two easy steps.

Step
1

From the Account Activity page, click "Download Account Activity" under the "I'd like to..." section.

DOWNLOAD ACCOUNT ACTIVITY

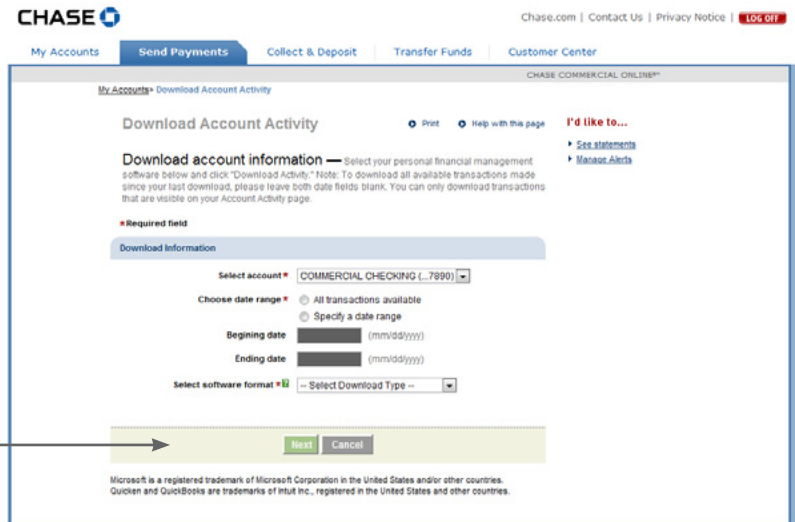


Step
2

Enter information in the fields provided. Please note that multiple download formats are supported, including Comma Separated Value (CSV) and popular account software formats, such as Quickbooks® or Microsoft Money®.

Once you have entered the requested information, click "Next." You will then be prompted to save the file containing your transaction information.

CLICK NEXT



¹ Terms and conditions, including fees and limitations, apply as described in the Chase Commercial Online Access and Services Agreement.

² Additional fees apply. Contact your Commercial Banker for more details.